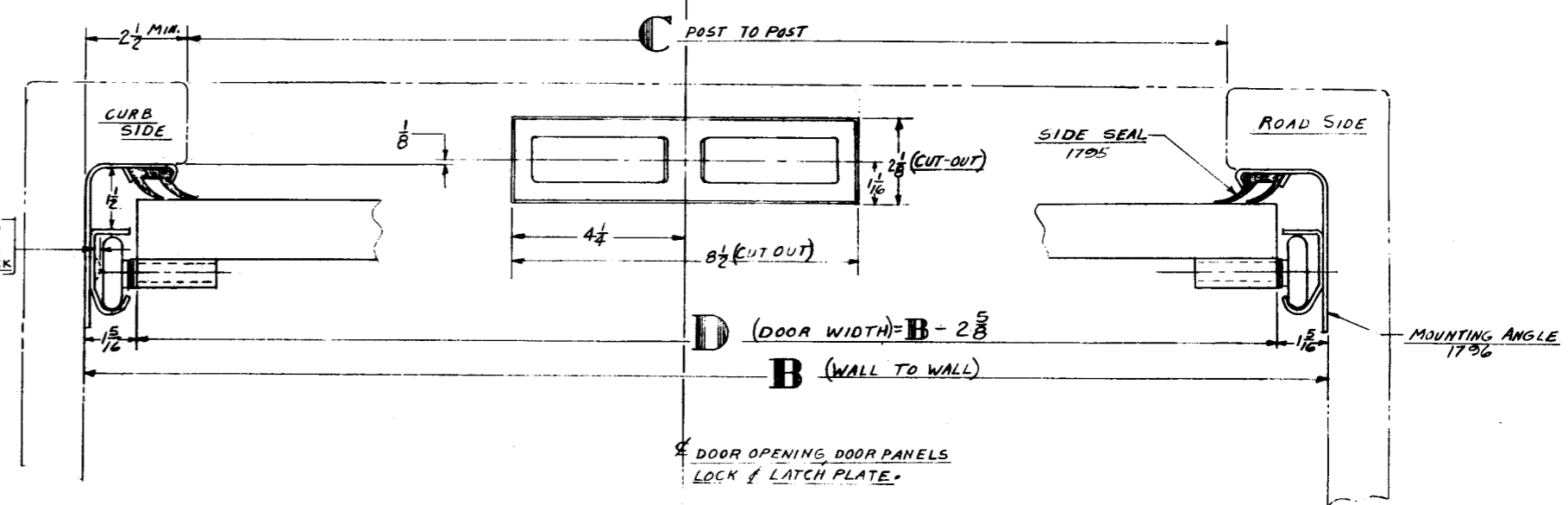
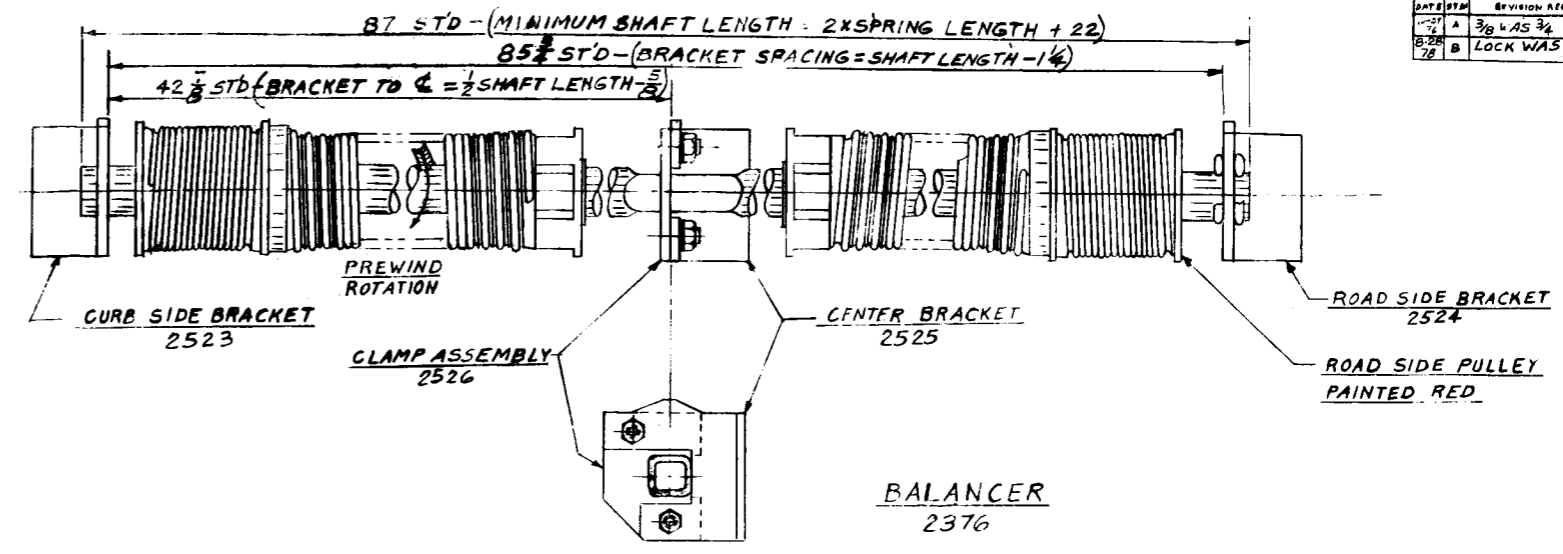
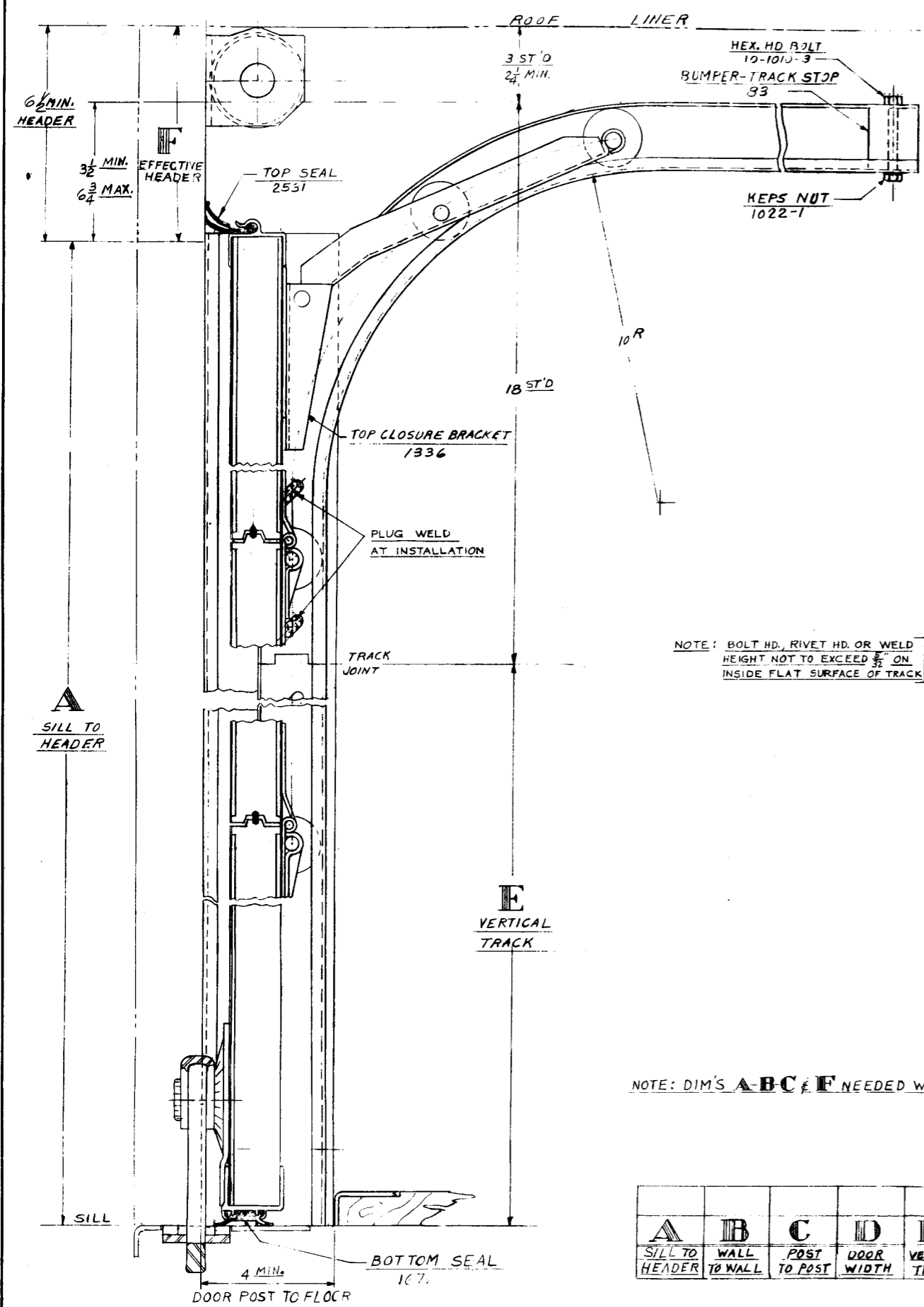


DATE	BY	REVISION	RECORD	APP'D	OR	CR
1-27-76	A	38	WAS 34	24	ED	15
2-28-76	B	LOCK WAS #70			BC	

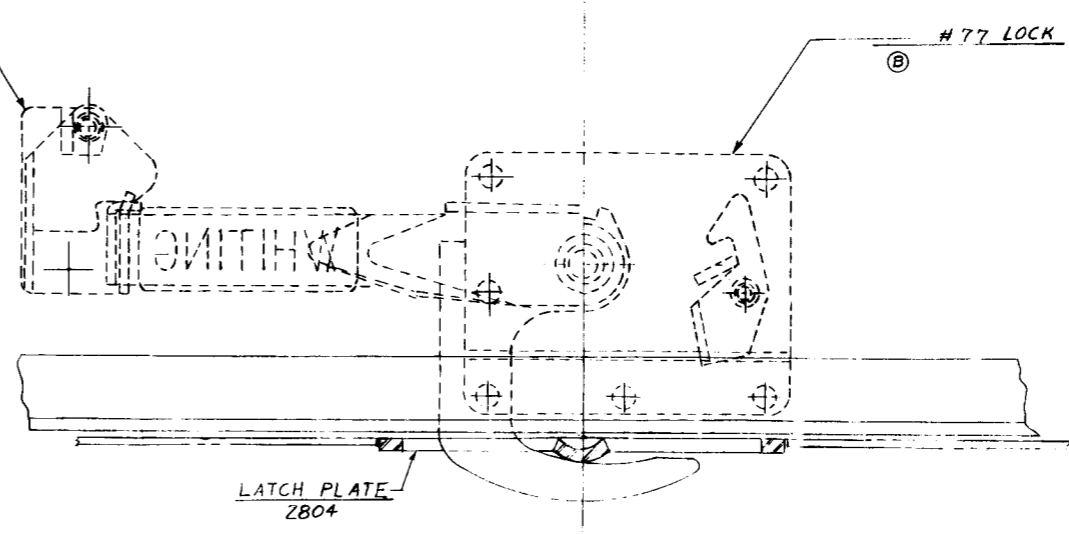


NOTE: BOLT HD, RIVET HD, OR WELD HEIGHT NOT TO EXCEED 5/8" ON INSIDE FLAT SURFACE OF TRACK

NOTE: VERTICAL AND HORIZONTAL TRACK SPACING DIMENSION MUST BE HELD ± 1/8". TRACK MUST BE INSTALLED PARALLEL.

NOTE: DIM'S A-B-C-E-F NEEDED WITH ORDER

A	B	C	D	E	F
SILL TO HEADER	WALL TO WALL	POST TO POST	DOOR WIDTH	VERTICAL TRACK	EFFECTIVE HEADER



TOLERANCES (EXCEPT AS NOTED)		CONSTRUCTION - D-2603	
DECIMAL	±	WHITING ROLL-UP DOOR MFG. CORP. AKRON, NEW YORK	
FRACTIONAL	±	SCALE	DRAWN BY E. DOEBLER
ANGULAR	±	DATE 3-17-76	APPROVED BY
TITLE STANDARD INSTALLATION TEMP. SAVER DOOR		DRAWING NUMBER	REVISION
		D-2494	B