



WHITING DOOR MANUFACTURING LIMITED

3435 South Service Road, Burlington, Ontario L7N 3W6
 Tel: 1-877-845-3816 Fax: 1-866-845-9008
www.whitingcanada.com info@whitingcanada.com

QUOTE REQUEST

Date: _____

SOLD TO: _____

SHIP TO: _____

SHIP VIA: _____ MARK PACKAGE: _____ SHIP DATE: _____

QUANTITY: _____

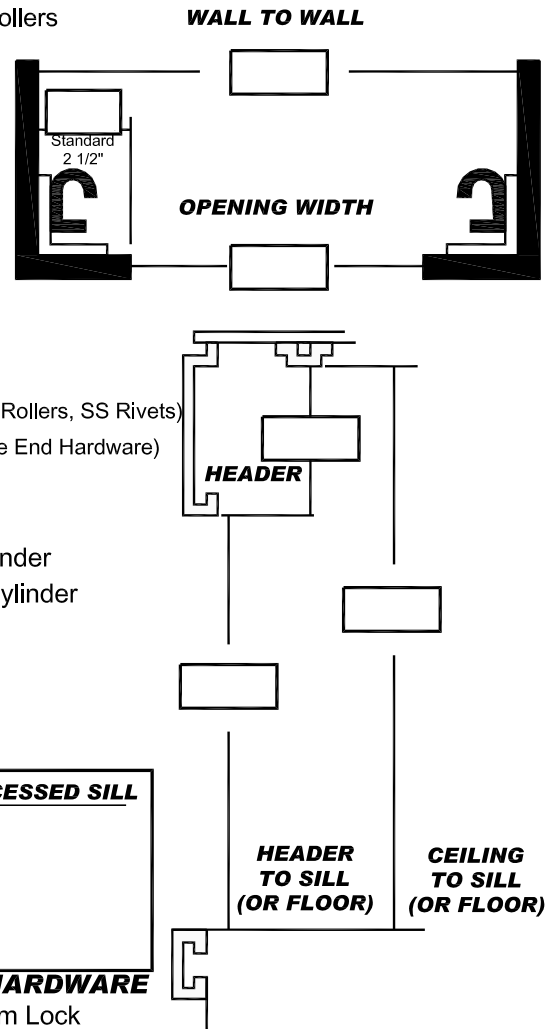
OPTIONAL HARDWARE

- DRYFREIGHT
 - DF Painted White
 - DF Aluminum Clad
 - DF Laminated Premium
 - DF B.A.S.S.
 - COLDSAVER
 - CS Bright Annealed SS
 - CS Mill Finish SS
 - TEMPGUARD
 - HINGED TRUSS
 - CARGOGUARD
 - EUROCEL
 - BEVERAGE
- Regular Vinyl Side Seals
 - Steel Rollers Long Stem Steel Rollers
 - Brush Side Seals
 - Exterior Stainless Steel Package
 - Interior Stainless Steel Package
 - Stainless Steel Rivets Only
 - Stainless Steel Latch Plate
 - 5 Rows of Hinges
 - Double End Hinges
 - 32" Pull Strap
 - Positive Stop
 - Narrow Mounting Angle
 - Ryder Package (5 rows, Vinyl Side Seals, Steel Rollers, SS Rivets)
 - Universal Door (5 Rows, Vinyl Side Seals, Loose End Hardware)
 - CommandLIFT Automatic Door Opener

DRYFREIGHT LOCK OPTIONS

- #77 Cam Lock with Lock Box & Best Cylinder
- 70-200-300 Recessed Lock with Best Cylinder
- 70-300 Recessed Lock
- Inside Release Cam Lock and Keeper
- 1415 Slam Lock
- 125 Slam Lock (BEVERAGE doors)

MINIMUM HEADER REQUIREMENTS		TRACK SETBACK FOR RECESSED SILL	
DRYFREIGHT	5 3/4"	DRYFREIGHT	2 1/2"
TEMPGUARD	7"	TEMPGUARD	4"
COLDSAVER	7 1/2"	COLDSAVER	4 1/2"
SS COLDSAVER	8 1/4"		



COMMENTS: _____

STANDARD HARDWARE

- #77 Outside Cam Lock
- Twin Spring Balancer
- Nylon Rollers
- 19" Pull Strap
- 2" Track
- Door Mounted Top Seal
- Aluminum U-Channel and Bottom Seal
- 4 Rows of Hinges
- All Hardware E-Coated