



WHITING DOOR MANUFACTURING LIMITED

3435 South Service Road, Burlington, Ontario L7N 3W6
Tel: 1-877-845-3816 Fax: 1-866-845-9008
www.whitingcanada.com info@whitingcanada.com

ORDER FORM

Date: _____

P.O.: _____

SOLD TO: _____

SHIP TO: _____

SHIP VIA: _____ MARK PACKAGE: _____ SHIP DATE: _____

QUANTITY: _____

OPTIONAL HARDWARE

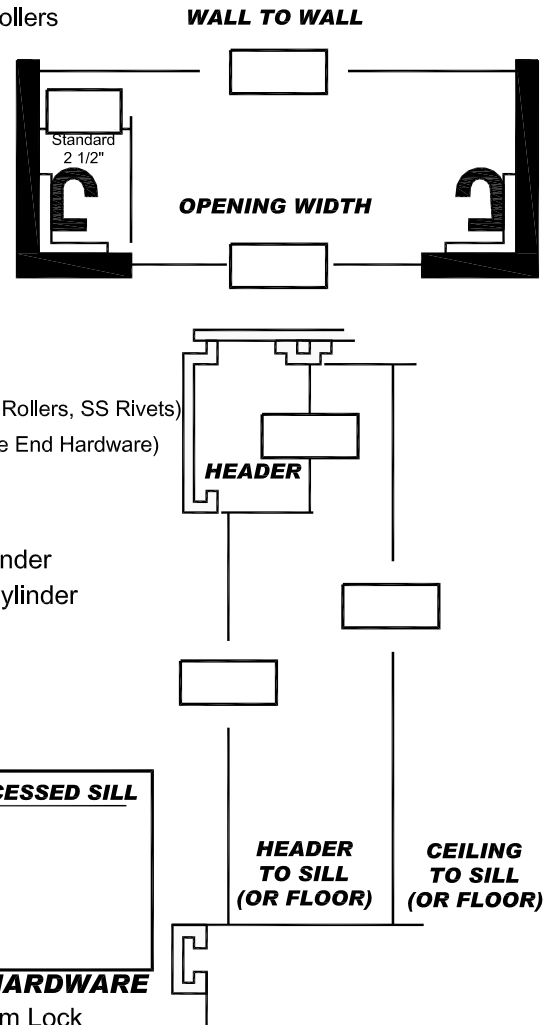
- DRYFREIGHT
- DF Painted White
- DF Aluminum Clad
- DF Laminated Premium
- DF B.A.S.S.
- COLDSAVER
- CS Bright Annealed SS
- CS Mill Finish SS
- TEMPGUARD
- HINGED TRUSS
- CARGOGUARD
- EUROCEL
- BEVERAGE

- Regular Vinyl Side Seals
- Steel Rollers Long Stem Steel Rollers
- Brush Side Seals
- Exterior Stainless Steel Package
- Interior Stainless Steel Package
- Stainless Steel Rivets Only
- Stainless Steel Latch Plate
- 5 Rows of Hinges
- Double End Hinges
- 32" Pull Strap
- Positive Stop
- Narrow Mounting Angle
- Ryder Package (5 rows, Vinyl Side Seals, Steel Rollers, SS Rivets)
- Universal Door (5 Rows, Vinyl Side Seals, Loose End Hardware)
- CommandLIFT Automatic Door Opener

DRYFREIGHT LOCK OPTIONS

- #77 Cam Lock with Lock Box & Best Cylinder
- #70-200-300 Recessed Lock with Best Cylinder
- #70-300 Recessed Lock
- Inside Release Cam Lock and Keeper
- #1415 Slam Lock
- #125 Slam Lock (BEVERAGE doors)

MINIMUM HEADER REQUIREMENTS		TRACK SETBACK FOR RECESSED SILL	
DRYFREIGHT	5 3/4"	DRYFREIGHT	2 1/2"
TEMPGUARD	7"	TEMPGUARD	4"
COLDSAVER	7 1/2"	COLDSAVER	4 1/2"
SS COLDSAVER	8 1/4"		



COMMENTS: _____

STANDARD HARDWARE

- #77 Outside Cam Lock
- Twin Spring Balancer
- Nylon Rollers
- 19" Pull Strap
- 2" Track
- Door Mounted Top Seal
- Aluminum U-Channel and Bottom Seal
- 4 Rows of Hinges
- All Hardware E-Coated